

# Features

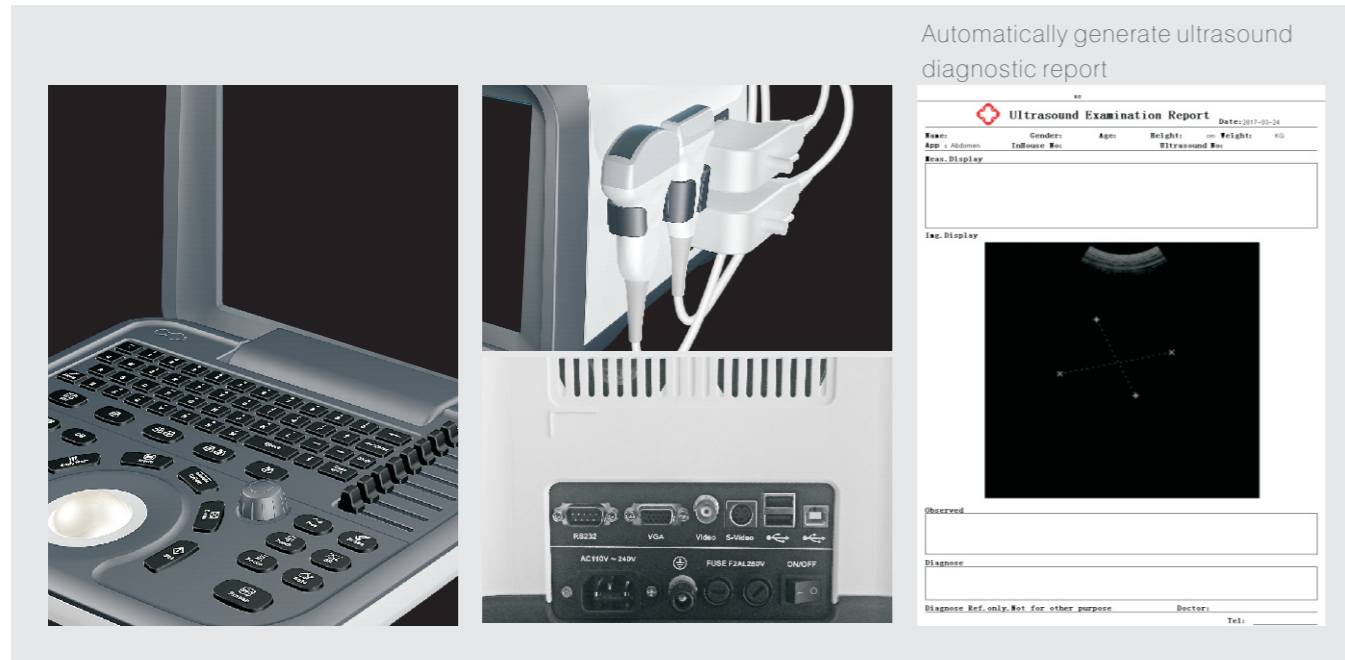
- 10 inch LED monitor
- Double activated transducer connectors
- Support obstetrics,urology,abdomen,gynecology,small parts and other professional measuring software packages
- Double USB ports
- Auto-generate BMP format report
- Double wave beam imaging technology
- Support multiple data transmission interface
- One key full screen design,hidden menu item,let the diagnosis more intuitive

## ZQ-6602

Full Digital B/W Ultrasound Machine



## Innovative Ergonomic Design



**WUHAN ZONCARE BIO-MEDICAL ELECTRONICS CO.,LTD.**

Add: Zoncare Building, No. 380, High-tech 2nd Road, Eastlake High-tech Development Zone, Wuhan, Hubei 430206 P. R. China.

Tel: +86-27-8777 0581 Fax: +86-27-8777 0203

Email: info@zoncare.com <http://www.zoncare.com>

2017 Wuhan Zoncare Bio-Medical Electronics Co.,Ltd. All rights reserved. Specifications subject to changes without prior notice.

<http://www.zoncare.com>

