

Company Profile

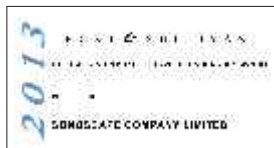
Since its establishment, SonoScape has been committed to providing high quality medical equipment for the healthcare sector. SonoScape specializes in the development and production of diagnostic ultrasound solutions. By introducing advanced imaging techniques, SonoScape has improved diagnostic accuracy and therefore enabled better health outcomes. Since 2002, SonoScape has reached and benefited millions of people. With the world in mind, SonoScape will continue providing more effective and accessible healthcare solutions, through persistent innovation and passion for life.

Quote from the Analyst of

"The Frost & Sullivan Award for Growth Leadership is presented to the company that has demonstrated excellence in capturing the highest annual compound growth rate for the last 3 years...The sales of ultrasound devices contribute an overwhelming proportion of total revenue, helping the company strengthen its leading position to outperform the competitors in the marketplace. With increasing penetration of mid-to high-end ultrasound devices, SonoScape is expected to see significant growth potential in the future..."

Company Milestone

- 2002: Company Founded in Shenzhen, China
- 2003: Released SSI-1000: the 1st 15" Portable Color Doppler system in China
- 2004: Released SSI-2000: the 1st PC platform Color Doppler system in China
- 2005: Received the "High Technology Company" award from the PRC government
- 2007: Received "CHINA TOP BRAND" award in the Medical Equipment Industry
- 2007: Released the 1st Real time 4D ultrasound system in China
- 2008: Received "European Entrepreneurial Company 2008" award from FROST & SULLIVAN
- 2008: Received "Flagship Company" award in the Medical Equipment Industry in China
- 2009: Received "Product Quality Leadership Award 2009" from FROST & SULLIVAN
- 2011: Received the Reddot 2011 Product Design Award for S20 in Essen, Germany
- 2013: Received "Ultrasound Market Growth Leadership Award, 2013" from FROST & SULLIVAN
- 2014: Received the iF Product Design Award 2014 for S9 in Munich, Germany
- 2014: Received "Company of the Year in Ultrasound Market, 2014" from FROST & SULLIVAN



ISO 13485

CE 0197

SonoScape

Yizhe Building, Yuquan Road, Shenzhen, 518051, China
Tel: 86-755-26722890 Fax: 86-755-26722850
 E-mail:sonoscape@sonoscape.net www.sonoscape.com

SonoScape



The new standard
for HCU

S8

U-S820150316

Caring for Life through Innovation

Powerful Lightweight, Like Nothing Else

The S8 is designed by our genius engineering in a very lightweight but powerful architecture. Although combining high capacity built-in Li-ion battery and two active transducer sockets, S8 still keeps slim and lightweight compact architecture, assuring it is available anytime and anywhere.

- 15" LCD anti-glare screen: provide clear image from any angle
- 2 universal transducer sockets for quick transducer switch during scanning
- Abundant connection interfaces: DICOM 3.0, USB port, VGA, S-video, and ECG
- Built-in Li-ion battery for continuous scanning more than one hour
- With the slim and compact trolley, S8 can also be used in a stationary way.



Cutting-edge Features



The S8 is a full-featured portable color Doppler unit from SonoScape, designed in a new powerful lightweight architecture to meet all your high performance application requirements, from volumetric 4D with superior rendering capabilities, to cardiovascular exams including adult and pediatric multi-plane transesophageal echocardiography (TEE).

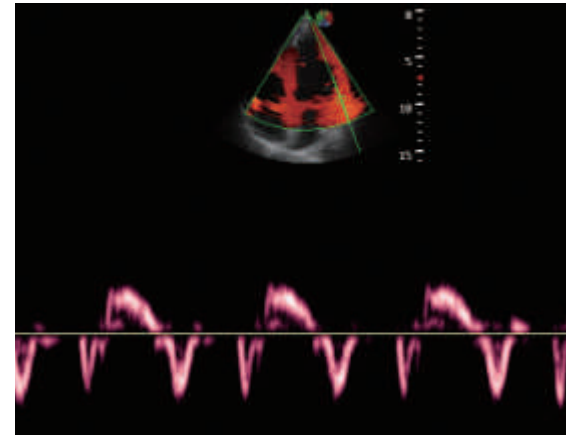
With the superior imaging quality and powerful workflow typically available only in the very high-end cart-based systems, this system is built to deliver outstanding value for our customers worldwide.

- Complete imaging mode: 2D with THI , Color M,CFM, PDI, PW, HPRF, CW
- Full cardiovascular transducers: adult and pediatric TEE, phased array, pediatric phased array, high frequency linear array
- Support high density broadband transducers
- Integrated with state-of-the-art technologies: μ -scan, B-steer, Multiple-beam processing, and 4D imaging
- Comprehensive cardiovascular packages: Stress echo, TDI, Steer M, IMT, and Automatic flow volume analysis
- Intuitive interface and full functional control panel

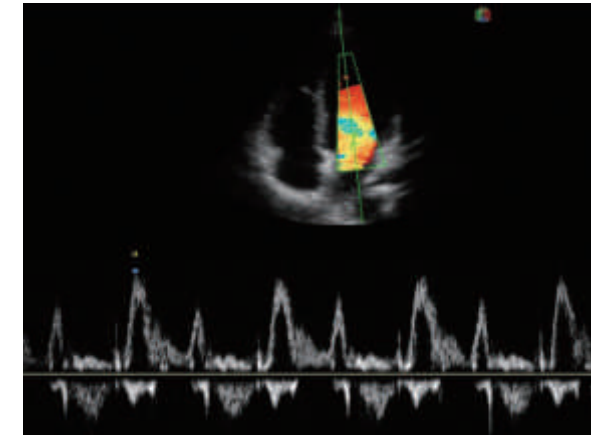


The Multi-specialty High Performance Imaging

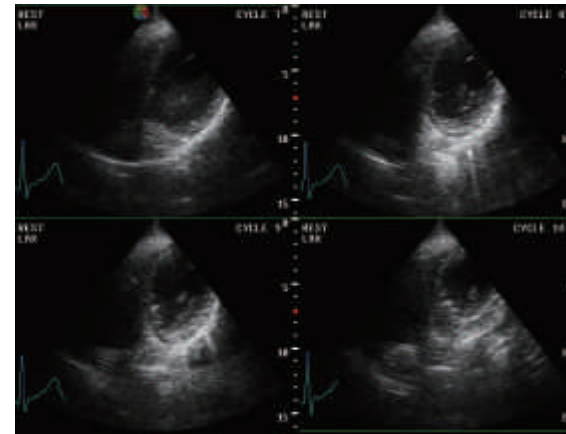
SonoScape has been focusing on what's the most important thing for an ultrasound system, the imaging quality, and successfully develop S8 to allow you to achieve crystal clear images with greater accuracy for your confident diagnosis on a very wide variety of patients.



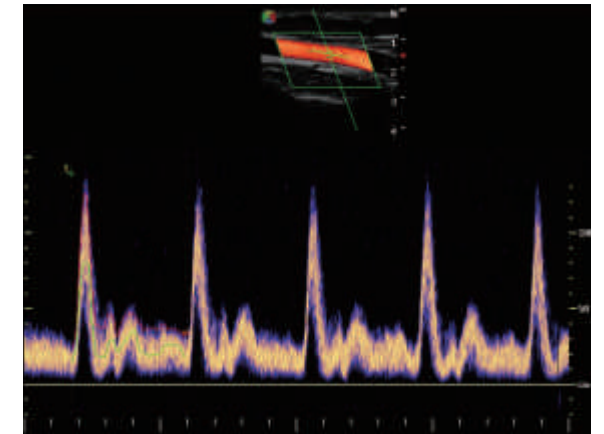
Tissue Doppler Imaging



Mitral Valve Flow



Stress Echo



Common Carotid Artery in PW Doppler



Umbilical Cord Entanglement



Ovary