

Company Profile

Since its establishment, SonoScape has been committed to providing high quality medical equipment for the healthcare sector. SonoScape specializes in the development and production of diagnostic ultrasound solutions. By introducing advanced imaging techniques, SonoScape has improved diagnostic accuracy and therefore enabled better health outcomes. Since 2002, SonoScape has reached and benefited millions of people. With the world in mind, SonoScape will continue providing more effective and accessible healthcare solutions, through persistent innovation and passion for life.

Quote from the Analyst of

"The Frost & Sullivan Award for Growth Leadership is presented to the company that has demonstrated excellence in capturing the highest annual compound growth rate for the last 3 years...The sales of ultrasound devices contribute an overwhelming proportion of total revenue, helping the company strengthen its leading position to outperform the competitors in the marketplace. With increasing penetration of mid-to high-end ultrasound devices, SonoScape is expected to see significant growth potential in the future..."

Company Milestone

- 2002: Company Founded in Shenzhen, China
- 2003: Released SSI-1000: the 1st 15" Portable Color Doppler system in China
- 2004: Released SSI-2000: the 1st PC platform Color Doppler system in China
- 2005: Received the "High Technology Company" award from the PRC government
- 2007: Received "CHINA TOP BRAND" award in the Medical Equipment Industry
- 2007: Released the 1st Real time 4D ultrasound system in China
- 2008: Received "European Entrepreneurial Company 2008" award from FROST & SULLIVAN
- 2008: Received "Flagship Company" award in the Medical Equipment Industry in China
- 2009: Received "Product Quality Leadership Award 2009" from FROST & SULLIVAN
- 2011: Received the Reddot 2011 Product Design Award for S20 in Essen, Germany
- 2013: Received "Ultrasound Market Growth Leadership Award, 2013" from FROST & SULLIVAN
- 2014: Received the iF Product Design Award 2014 for S9 in Munich, Germany
- 2014: Received "Company of the Year in Ultrasound Market, 2014" from FROST & SULLIVAN



ISO 13485

CE 0197



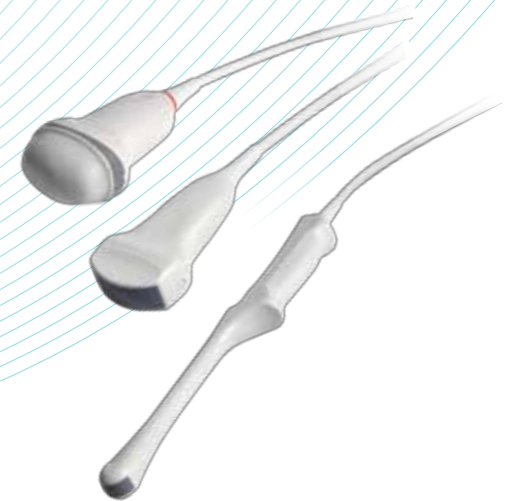
Ultra-Compact System with Excellent Vision

As the preferred compact ultrasound platform for today's women's health imaging challenges, SonoScape S12 offers advanced solutions for the needs of every woman at any stage of their pregnancy or any gynecologic exam. Loaded with a host of must-have useful functions and a suite of extended applications, S12 commits to provide superior endovaginal imaging and best-in-class fetal imaging for both 2D and 3D/4D acquisition.

The new SonoScape S12 system takes special care in the health of women and their babies. Incorporating the outstanding obstetric and gynecological 2D image quality and high color sensitivity, S12 provides the imaging performance needed to address the unique concerns of women's health. A wide range of quantification tools also renders you valuable and understandable information about both the women and their fetus.

Intelligent OB/GYN Clinical Solutions

- Outstanding imaging performance for routine exams and detailed evaluations for obstetrics, gynecology and breast scanning applications
- Imaging filtering technology u-Scan for superior image performance through the minimizations of noises and artifacts
- Angle adjustable M-mode allows for acquisition of anatomically accurate M-mode from any fetal heart position
- Professional OB/GYN measurement package
- High elements convex probe to scan the fetal heart, performing deep penetration suitable for obstetrics examination
- Temperature detection technology of transvaginal probe, protect patients away from hurt and guarantee the quality and safety of the transducer
- High definition linear transducer for optimal and dynamic breast scanning
- Vivid 3D/4D acquisition, dater rendering and post-processing functionality on all exam in 2D and Color Doppler
- Multi-slice edit function help easily analyze the internal structure of the fetus
- Streamlines clinical reporting by automatically transferring patient and calculation data to DICOM compliant obstetrical and gynecologic reporting packages.

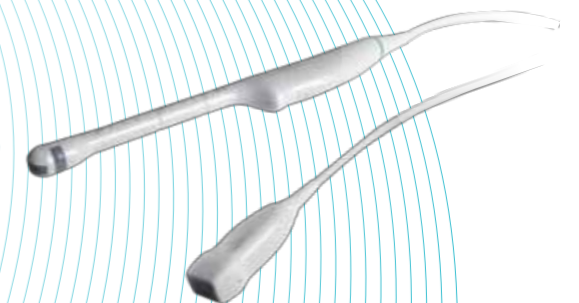




Apart from professional OB/GYN application, S12 also have full confidence in other fields of application whether traditional or emerging, such as Abdomen, Cardiovascular, Small parts, Musculoskeletal, Urology, Anesthesia and so on.

Confidence Across Every Application

- Pulse Inversion Harmonic Imaging can not only increase the signal-to-noise ratio but also increase the penetration in the far field
- M-tuning: One button automated image optimization for 2D, color and Doppler mode
- Outstanding 2D image quality even under the Doppler and M mode
- High performance of color sensitivity even for the tiny vessels and low velocity flow
- Real-time and reconstructed panoramic allow an extended view to scan the organs especially for large organs
- Triplex: Help to capture the real-time information of the tissue with active B/Color/PW mode
- Needle enhancement function help delineate needle location when performing interventions such as used in nerve blocking
- Professional Bi-plane probe supports dual live scanning



Convenient and Smooth Workflow

The intuitive user interface and fast system response will at a great extent improve your workflow during daily scanning.



◀ 15-inch high definition LED monitor with articulating arm

Auto Calculation: IMT ▶
Auto IMT, PW Auto-trace
and so on

Quick Measurement: ▶
Shortcut Keys for
OB/GYN/Cardiology
measurement

Customized settings based ▶
on your own working style

Full patient database and ▶
image management
solutions: AVI/JPG, 4 USB
ports, DVD and PDF
report, 500G HDD storage
capacity

Complete DICOM system: ▶
Transmission, Store, Worklist,
Print, MPPS, Commit

◀ 4 active transducer sockets
are available for a wide
range of applications

◀ Optional Built-in battery
which can last at least 90
minutes continue scanning

