



# OPENMARK 5000

Dual-Pillar permanent MRI system

## Shenzhen Anke High-tech Co., Ltd.

**Address:** Block B, LingYa Industrial Zone, Tangtou No.1 Road,  
Bao'an District, Shenzhen, 518108, P.R. China

**Tel:** +86-755-21622518 26688889

**Fax:** +86-755-26695307 26685908

**Email:** anke@anke.com

**Website:** www.anke.com

**Linkedin:** [www.linkedin.com/company/  
shenzhen-anke-high-tech-co--ltd](https://www.linkedin.com/company/shenzhen-anke-high-tech-co--ltd)

**Facebook:** <https://www.facebook.com/ankemri>

**Twitter:** [twitter.com/ankeint](https://twitter.com/ankeint)

Specifications and appearance of the equipment may change without prior notice. Anke reserves the right of final interpretation

Insight Into life





# Humanized design

**Advocating the combination of technology and humanities, provide a comfortable operation experience to you.**

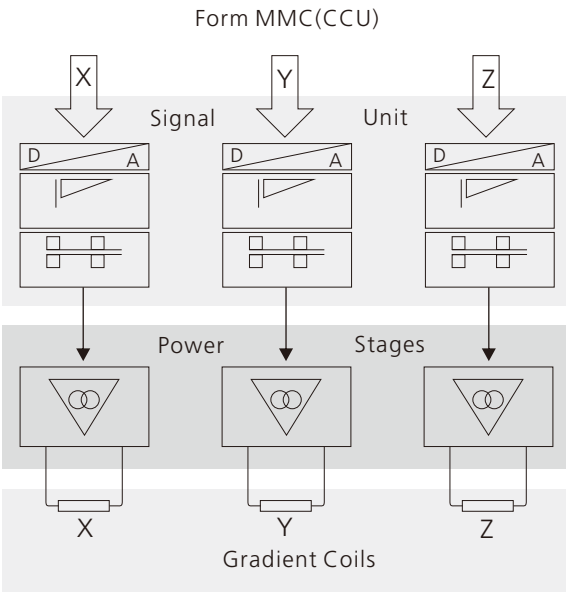
- Compact design for maximum use of limited space.
- Touched screen, bringing you a sense of technology and fashion.
- Integrated electric patient table, endless care for you.

## Perfect magnet

- Highest magnetic field of permanent magnet, industry leading level.
- Unique A-shimming technology, ensure a high level homogeneity of magnetic field.
- Intelligent temperature control system, supply a high stability of magnetic field.

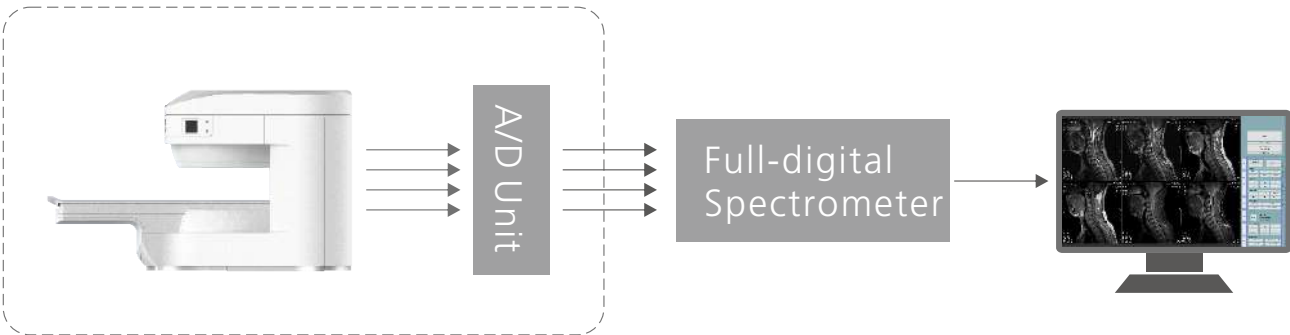
# Advanced gradient system

- Combined with Self-shielding & Eddy-'0' technology, ensure a high image quality.
- High level linearity & Powerful output, close to super-conducting MRI
- Easy to get large FOV and Thinner slice images, Fast scan speed

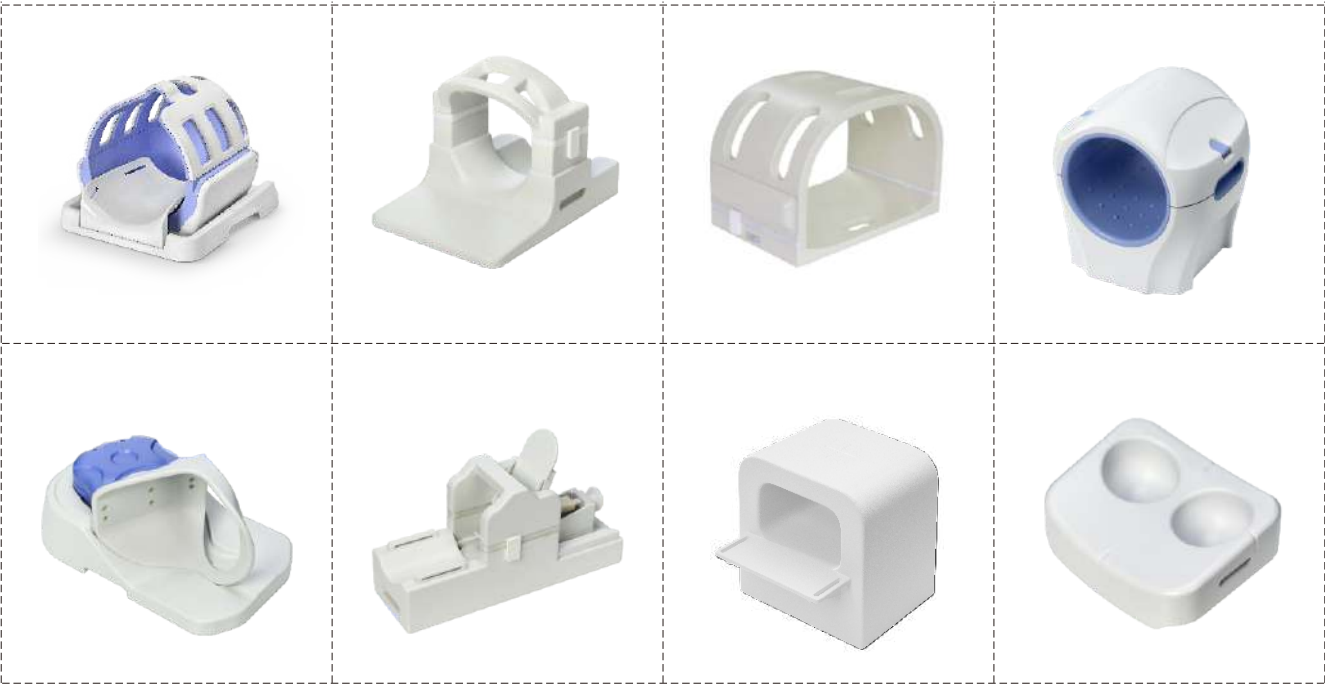


# Digital 4 channels RF system

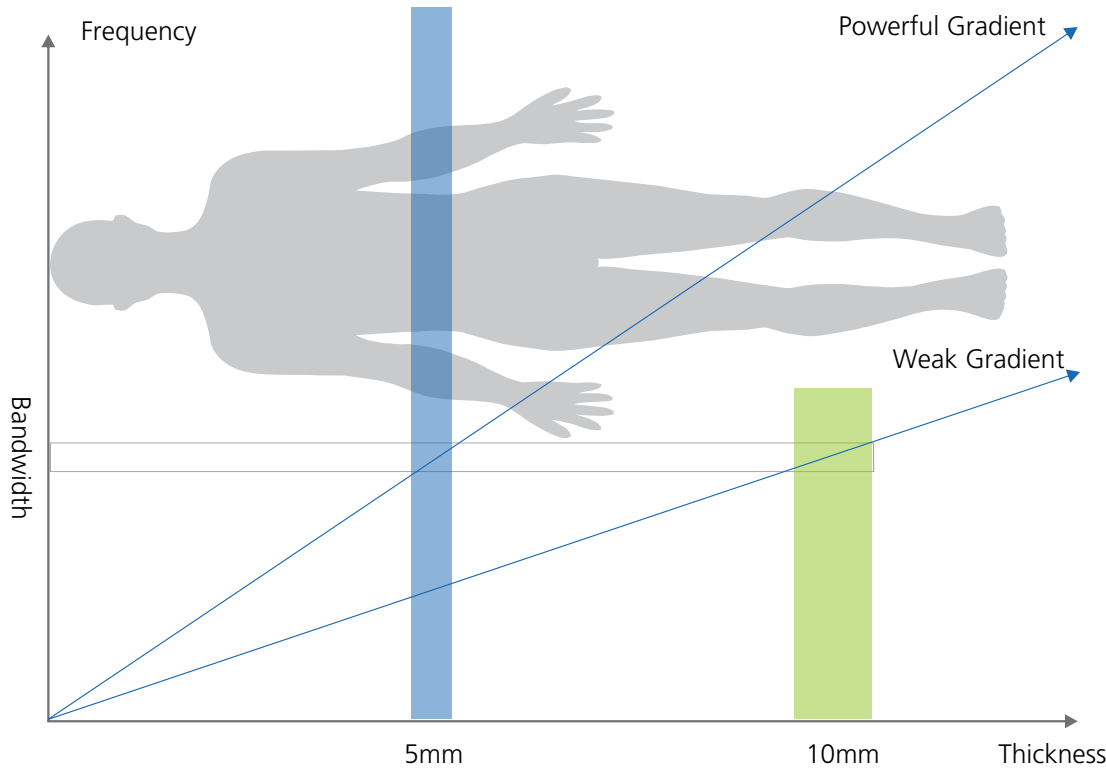
- 4 channels PA receiving coils
- 4 channels A/D Unit
- 4 channels full-digital spectrometer
- Powerful RF output



# Outstanding PA receiving coils\*



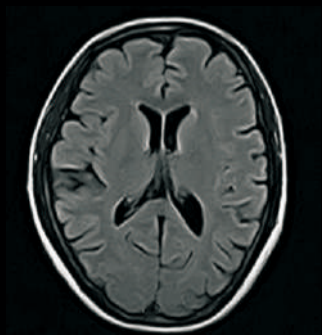
Marked with \*\*\* means it is not a standard offer, please contact us for further information



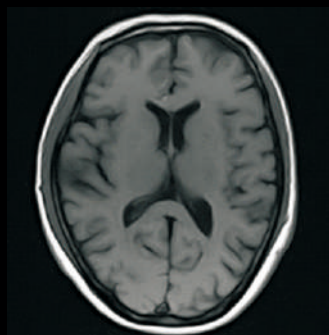


# Clinical images

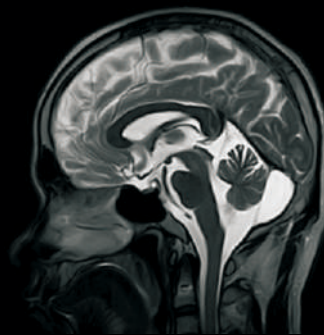
## Head



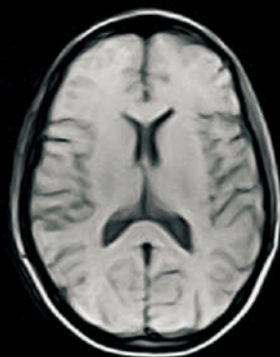
Brain T2\_FLAIR



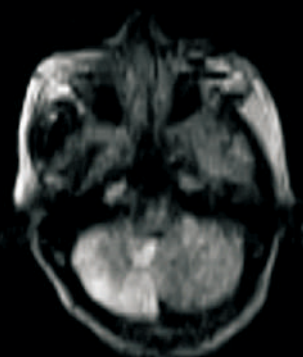
Brain T1WI



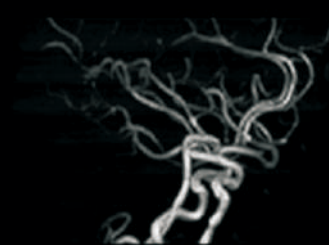
Brain T2WI



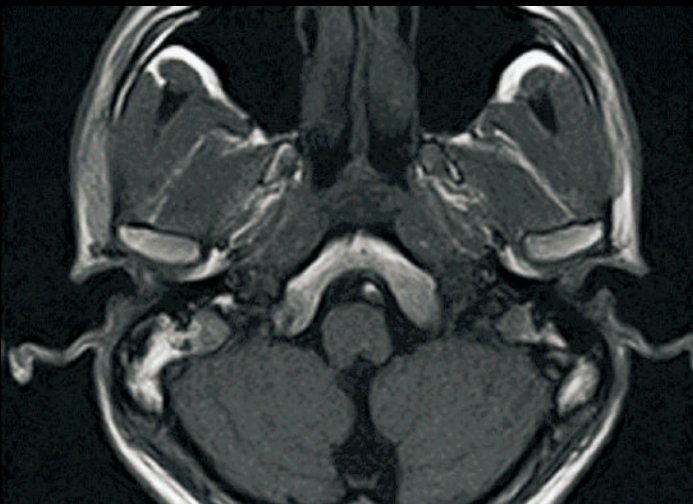
Brain DIXON\*



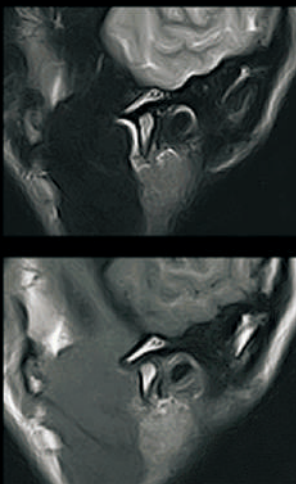
Brain DWI\_b1000



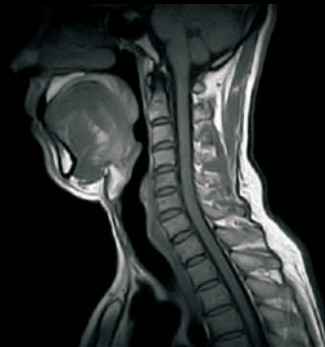
MRA TOF3D



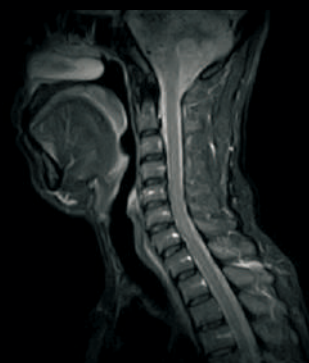
High resolution TMJ imaging



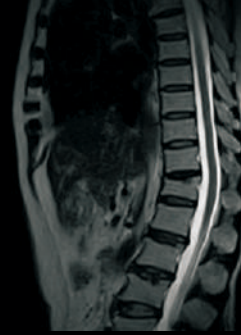
## Spine



C-Spine T1WI



C-Spine STIR



T-Spine T2WI



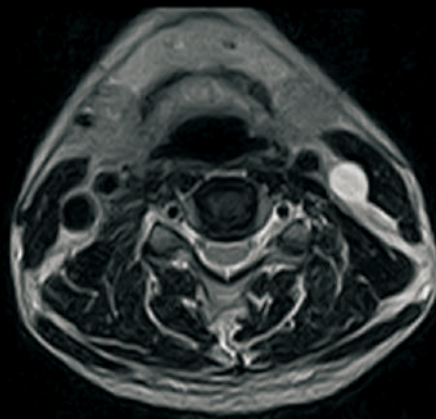
L-Spine T1WI



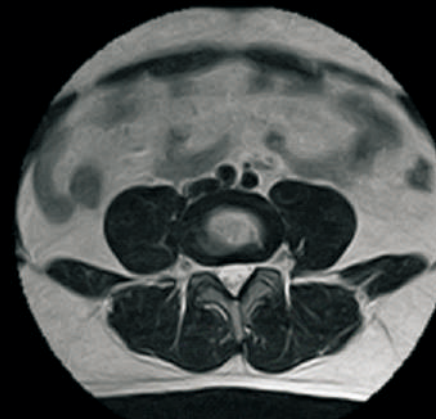
L-Spine STIR



L-Spine T2WI



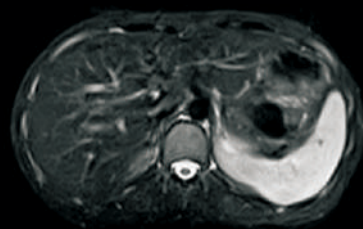
C-Spine T2WI



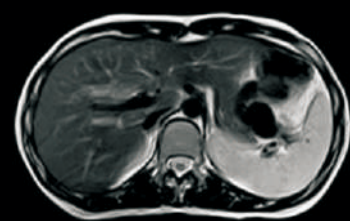
L-Spine T2WI



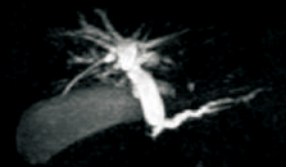
## Abdomen



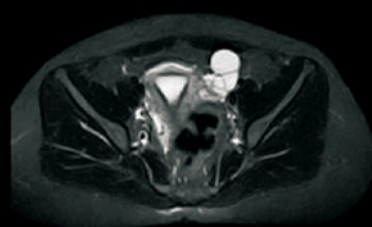
Abdomen STIR



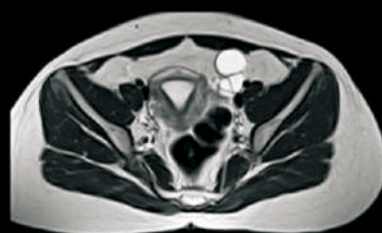
Abdomen T2WI



MRCP



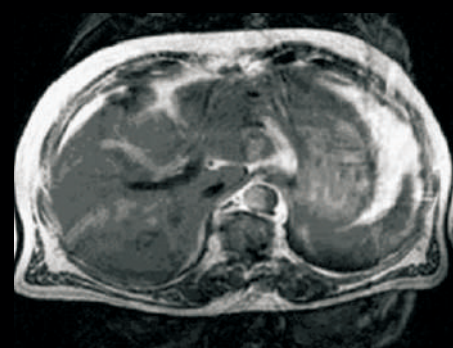
Pelvic STIR



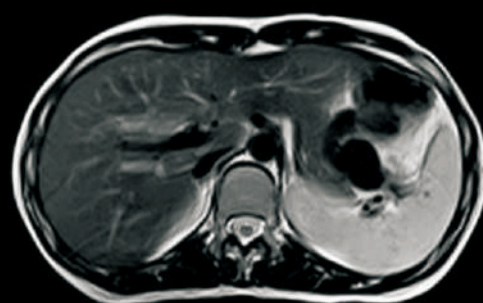
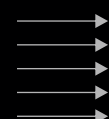
Pelvic T2WI



Pelvic T2WI



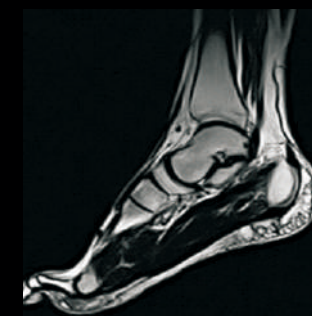
Routine FSE



Propeller FSE

"Propeller" technology reduce the artifact of image

## Joint



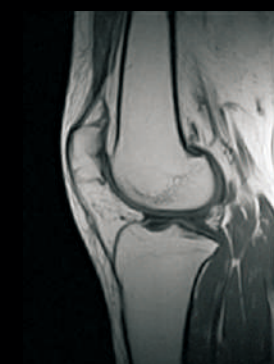
Ankle DIXON\_Fat



Ankle DIXON\_Water



Ankle T2WI



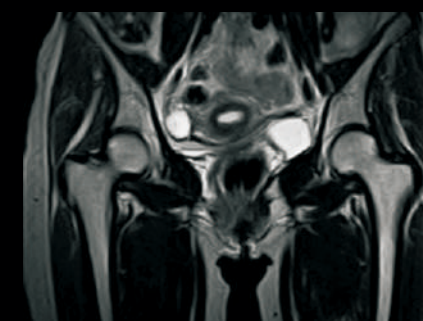
Knee T1WI



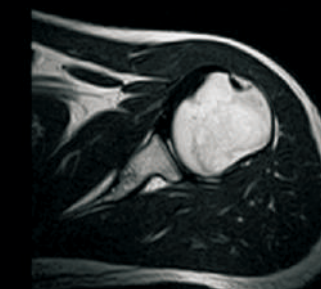
Knee STIR



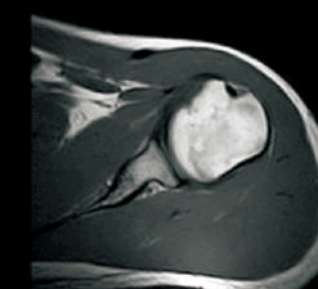
Knee GRE2D



Hip T2WI



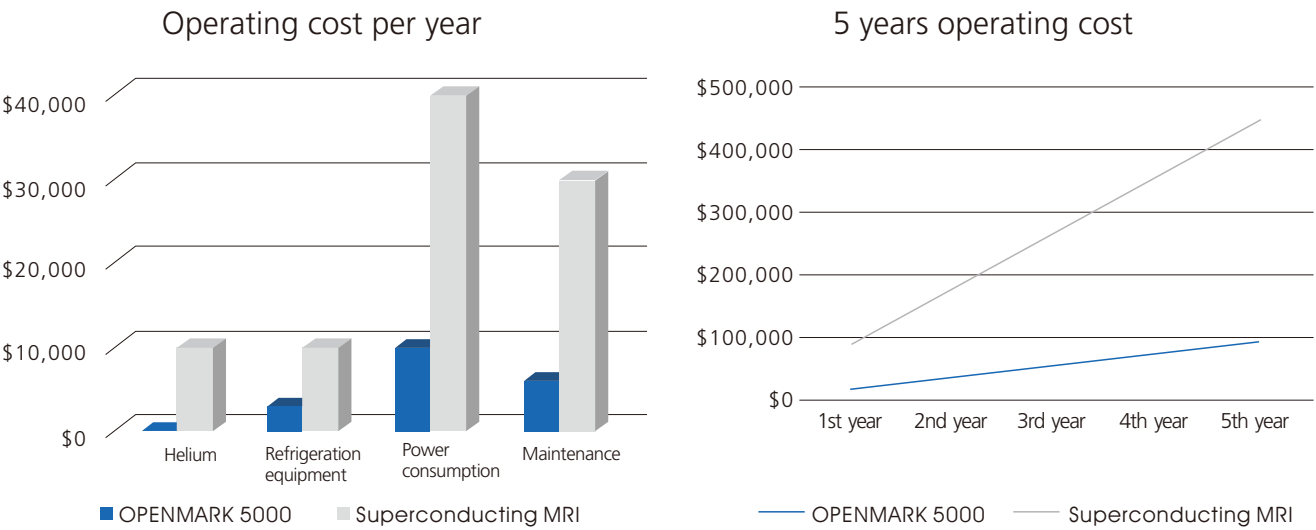
Shoulder T2WI



Shoulder T1WI

# Low operating cost

Meet your clinical application with convenient operation experience, save your 80% operating cost.\*



# Flexible site design



The sample data is for reference only, the actual cost depends on the customer's operation and maintenance.

# All-around Service Support

Service response within 24 hours;

Rich spare parts backup and fast delivery;

Efficient service network, over 100 service engineers.

