



# OPENMARK 4000

C-Shaped Permanent MRI system

## Shenzhen Anke High-tech Co., Ltd.

**Address:** Block B, LingYa Industrial Zone, Tangtou No.1 Road,  
Bao'an District, Shenzhen, 518108, P.R. China

**Tel:** +86-755-21622518 26688889

**Fax:** +86-755-26695307 26685908

**Email:** anke@anke.com

**Website:** www.anke.com

**Linkedin:** [www.linkedin.com/company/  
shenzhen-anke-high-tech-co--ltd](http://www.linkedin.com/company/shenzhen-anke-high-tech-co--ltd)

**Facebook:** <https://www.facebook.com/ankemri>

**Twitter:** [twitter.com/ankeint](https://twitter.com/ankeint)

Specifications and appearance of the equipment may change without prior notice. Anke reserves the right of final interpretation

Insight Into life



## Humanized design

Advocating the combination of technology and humanities, provide a comfortable operation experience to you.

- Large openness C-shape structure
- Touched LCD screen
- Integrated electric patient table

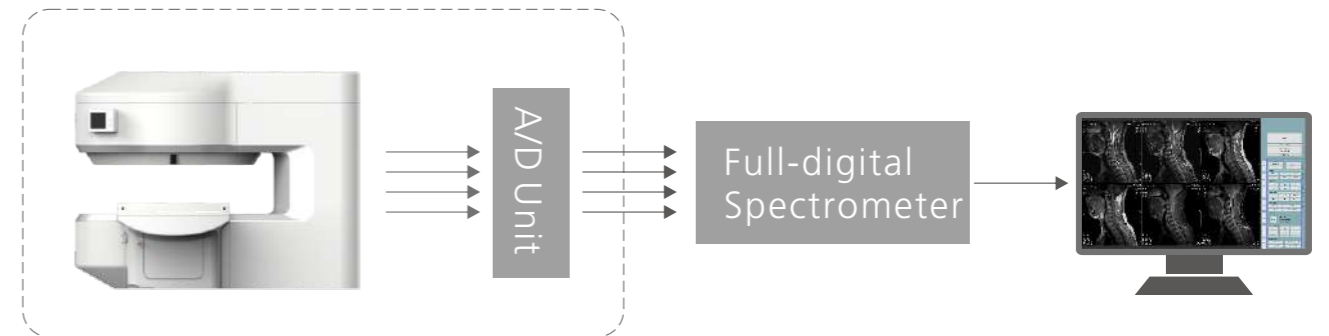


## Perfect magnet

- Unique A-shimming technology, ensure a high level homogeneity of magnetic field.
- Intelligent temperature control system, supply a high stability of magnetic field.

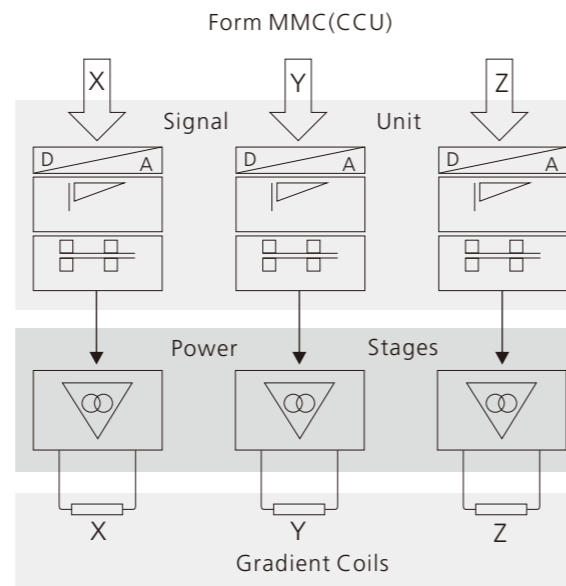
## Digital 4 channels RF system

- 4 channels PA receiving coils
- 4 channels A/D Unit
- 4 channels full-digital spectrometer
- Powerful RF output

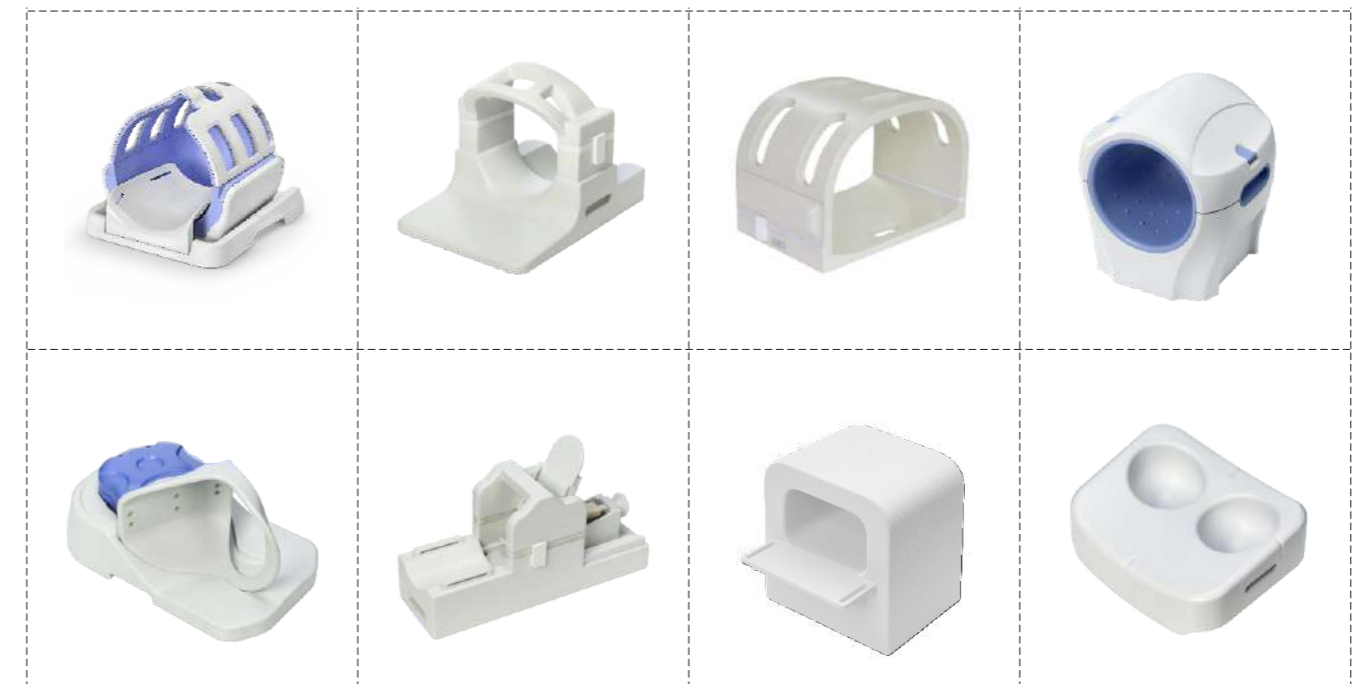


## Advanced gradient system

- Combined with Self-shielding & Eddy-'0' technology, ensure a high image quality.
- High level linearity & Powerful output

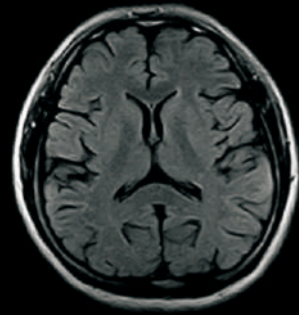


## Outstanding PA receiving coils\*

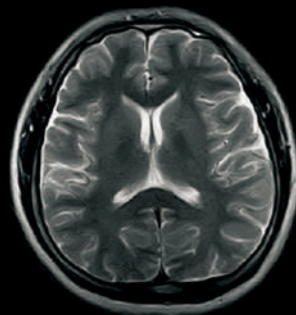


Marked with \*\*\* means it is not a standard offer, please contact us for further information

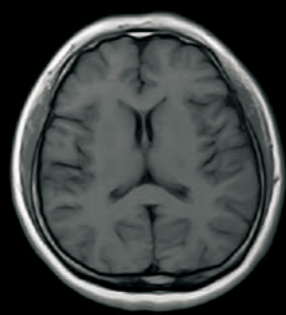
# Clinical images



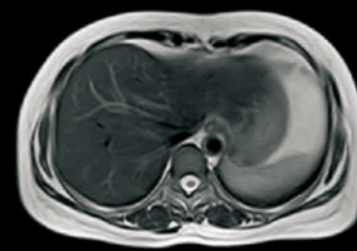
Brain T2\_FLAIR



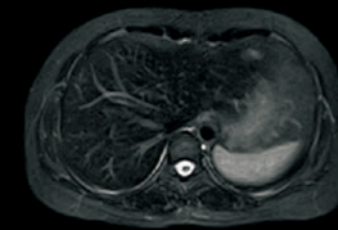
Brain T2WI



Brain T1WI



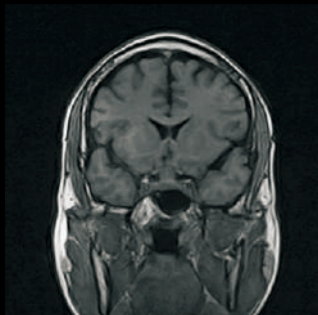
Abdomen T2WI



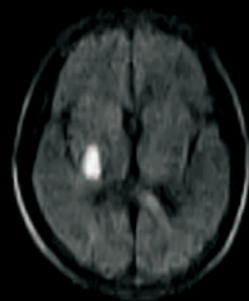
Abdomen STIR



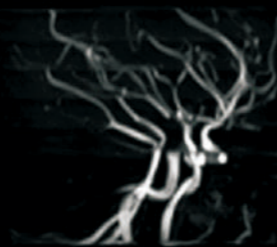
MRCP



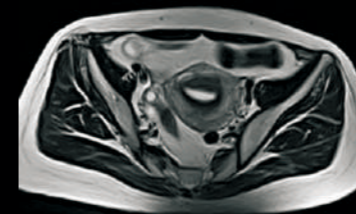
Brain T1WI\_GRE3D



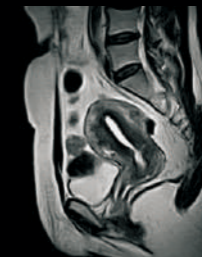
Brain DWI\_b1000



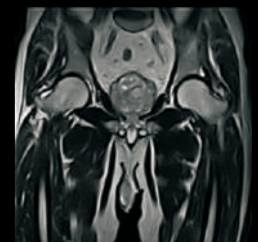
MRA\_TOF3D



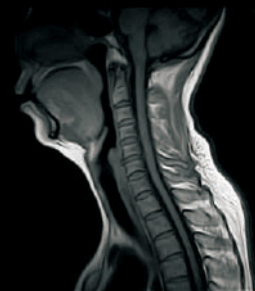
Pelvis T2WI



Pelvis T2WI



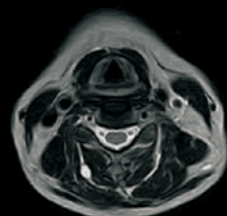
Prostate T2WI



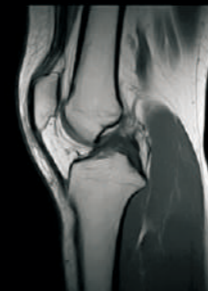
C-Spine T1WI



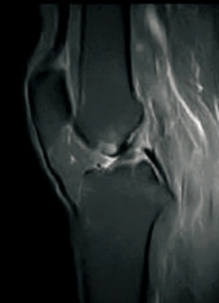
C-Spine STIR



C-Spine T2WI



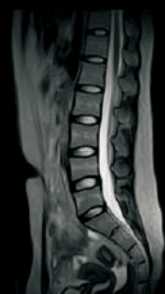
Knee T1WI



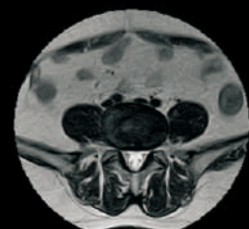
Knee STIR



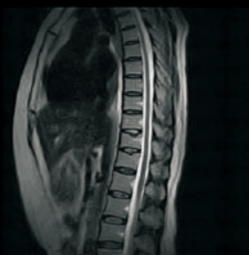
Knee GRE2D



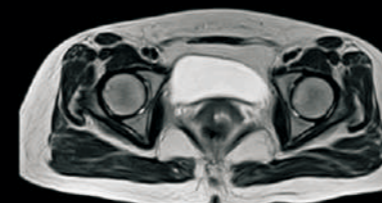
L-Spine T2WI



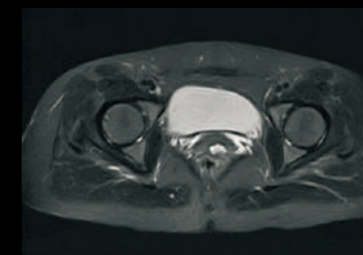
L-Spine T2WI



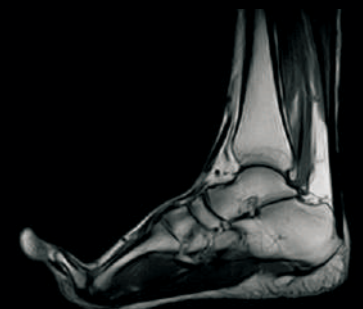
T-Spine T2WI



Hip T2WI



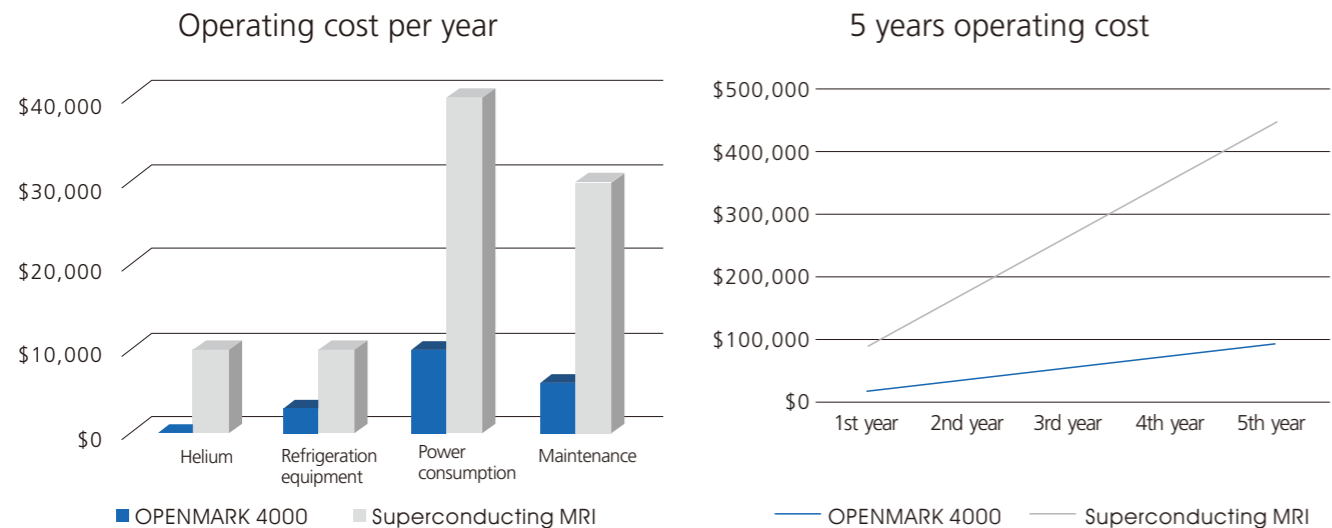
Hip STIR



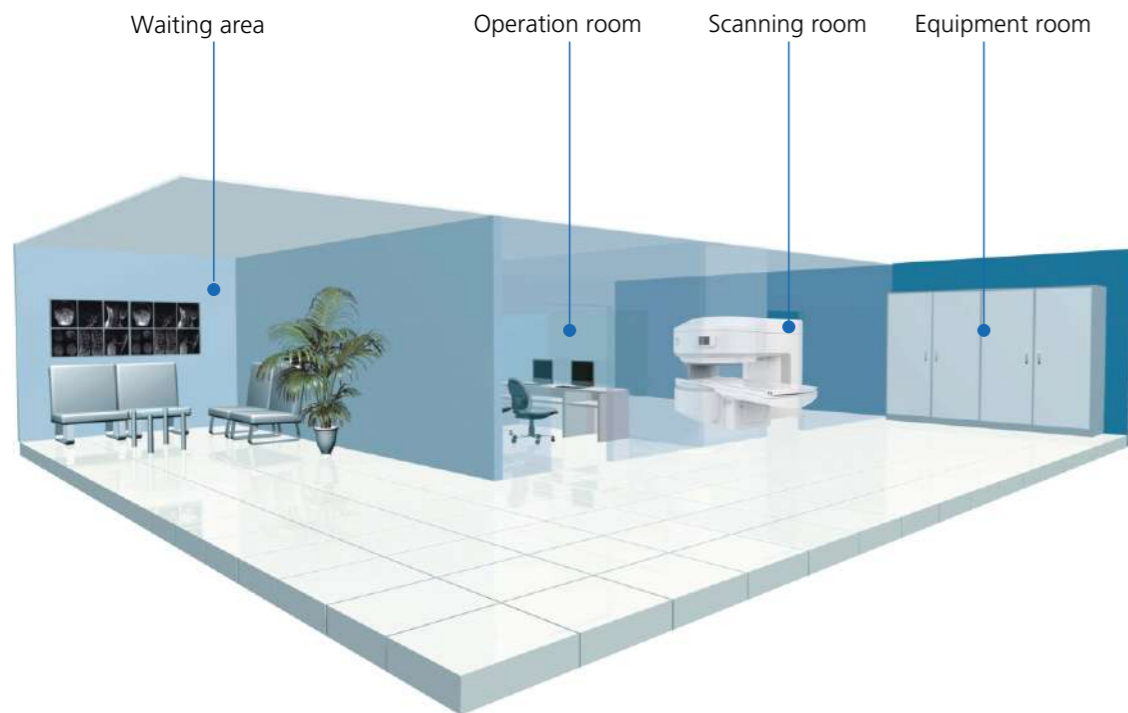
Ankle T1WI

## Low operating cost

Meet your clinical application with convenient operation experience, save your 80% operating cost.\*




## Flexible site design




The sample data is for reference only, the actual cost depends on the customer's operation and maintenance.


## All-around Service Support



Service response within 24 hours;



Rich spare parts backup and fast delivery;



Efficient service network, over 100 service engineers.

