



# LT-YJ2000

Automatic Liquid-based  
Thin-layer Cytology Slide Processor

A revolutionary product of Liquid-based Cytology



## 检测原理

- The specimen is diluted to reduce its viscosity, the non-diagnostic debris is filtered by membrane and diagnostic material remain, a thin layer of even cells is made automatically. It's very easy to discern this kind of slices, which improves the accuracy and positive rate greatly.
- The instrument utilizes the mechanical, pneumatic and hydrodynamic theories for cell dispersion, collection and transfer. Rotation of drive device breaks up the specimen softly. The pneumatic & hydrodynamic systems controlled by microprocessor supervise cell collection. Air pressure controlling, cell natural adhesion and high quality membrane are contributed to cells being transferred successfully. The whole process is highly automated.

## Features



### Patented Technology

The patented technology is used to demount the Lituo Filter automatically, the Filter is discharged into Collection Vial automatically to avoid the secondary pollution.



### Convenient

Simple and automated operation procedures. The preparation time of each slide is less than 2 minutes, it's reproducible for the same specimen.



### Muti-point Control

The system can identify the presence of Collection Vial, Lituo Filter and slide which ensures the success ratio of slide process. The alarm device on Waste Bottle will alarm when the bottle is full.



### Intelligent

With 5 inches large LCD screen the operation procedures are indicated synchronously which is convenient to be observed. Pressure controllers supervise the system pressure effectively, which can both prevent membranes from breaking and collect diagnostic material. Memory function is available, even if blackout happens, the operation will not be interfered.



### Steady

The structure of instrument are patented which makes the steadier transfer of cells and the evener cell thin layer without white slides.

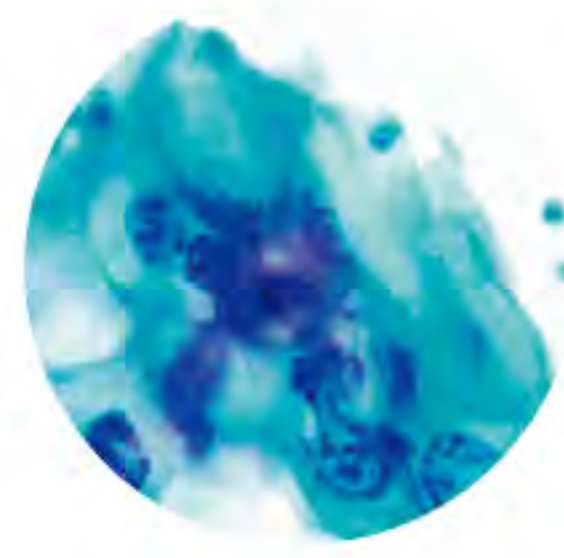


### Informatizational

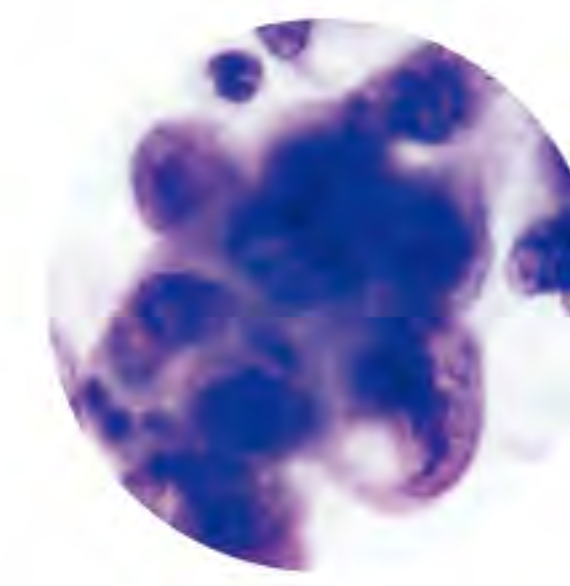
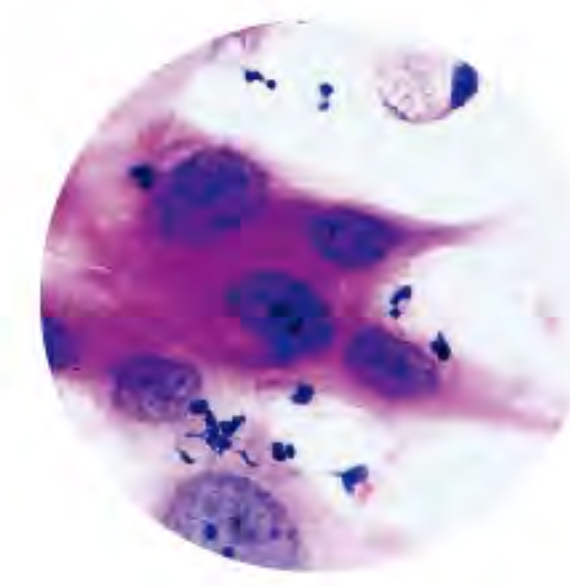
Scientific report system was verified on market, it's convenient to print, save and check records.

## ➤ Application

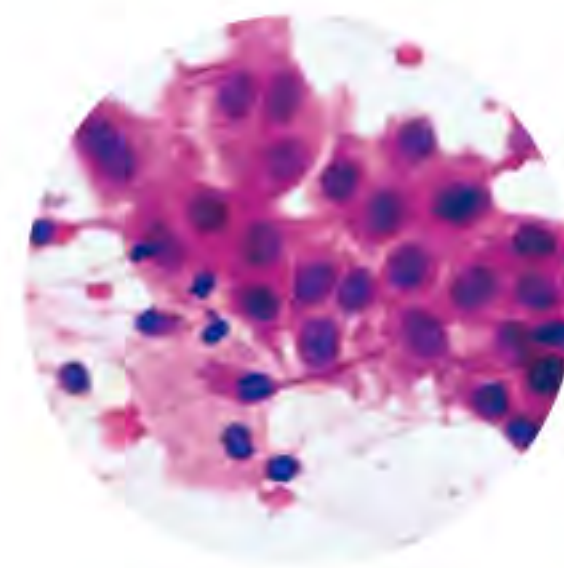
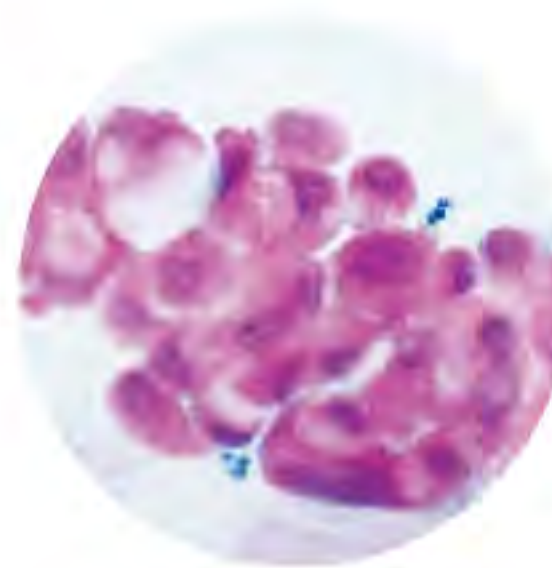
Slide process & staining of cell specimen prior to pathological analysis



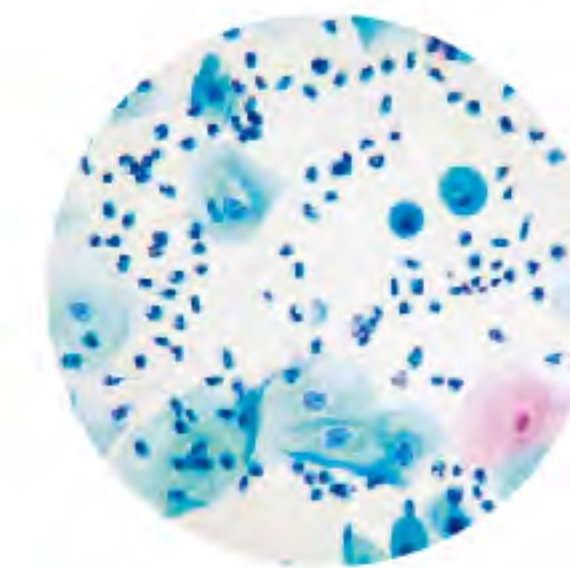
Slide of cervical cells



Slide of pleural effusion



Slide of sputum



Slide of urine, gastric juice, cavity effusion, cerebrospinal fluid

## ➤ The Ancillary Reagent Kit



### • Cell Preservative Solution

With cell encapsulation techniques 100% cells are preservable. It has special formula and can decompose mucus and distribute cells evenly.



### • Specimen Collection Brush

Removable soft brush head is convenient to collect specimens without injuring, the collected cells are no less than 50000.



### • Lituo Filter

Imported filter membranes are applied, the diameters and density of membrane hole are tested strictly which ensures quantity & quality of collected cells.



### • Anti Fall-off Slide

Through silicified process the slides have the charges to capture the lesion cells without white slides and cells falling.

## ➤ Operation Procedures



## ➤ Lituo Text-image System

- The interface is artistic and easy to operate
- With the functions of image collection, process and comparison
- Powerful record management function
- Reports standardized, multi-formats available

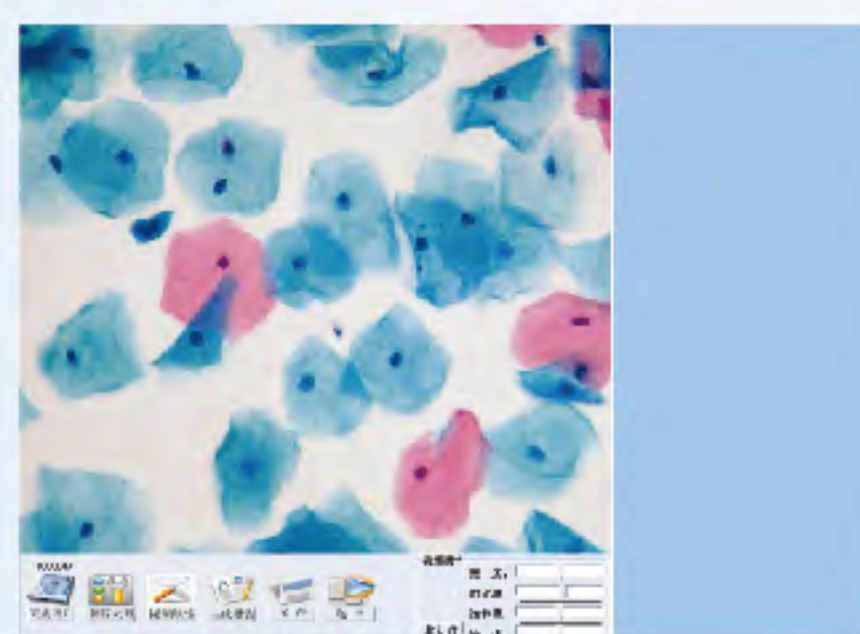
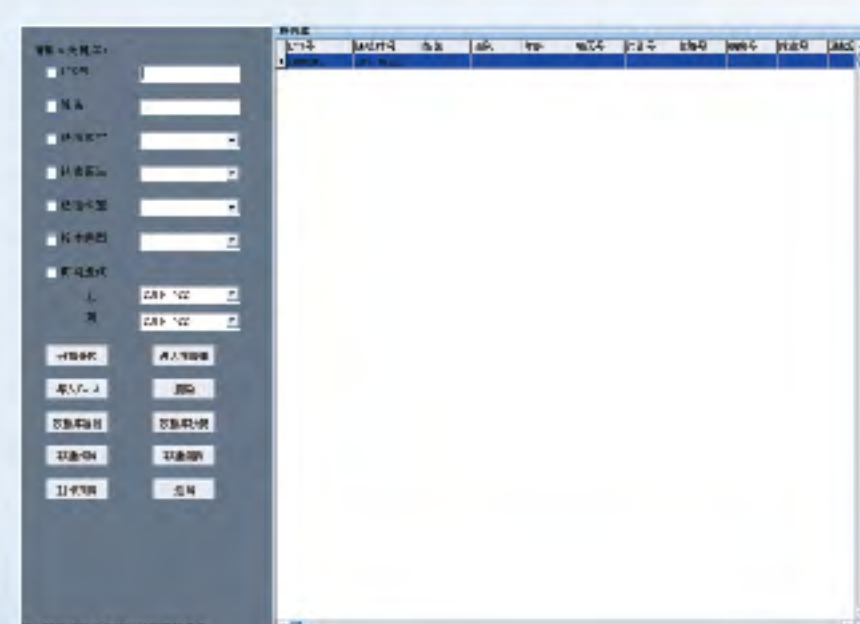


Image Acquisition



Create Record



Look-up Record

Liquid-based Thin Layer Cytological Test Report			
LT-YJ2000		Cell No: Received Date:	
Name:	Age:	Outpatient/ Admission No:	Ward No:
Submitting Hospital:		Department:	Submitting Doctor:
Specimen Type:		Method of Slide Review:	Degree of Specimen Satisfaction:
Specimen Satisfaction Items:			
(1) Number of Epithelial Cells			
(2) Squamous Cells			
(3) Biochemical Cells			
Inflammation Degree:			
Microorganism:			
(1) Actinomycetes			
(2) Vaginitis of Flora Abnormity			
(3) Infection of Trichomonas			
(4) Infection of Fungi			
(5) Infection of Monilia			
(6) Infection of HPV			
(7) Infection of Herpesvirus			
Analysis of squamous Cells:			
Analysis of Glandular Epithelium:			
Diagnostic Summary:			
Supplementary Suggestions:			
Pathologist:	Re-examination Doctor:	Test Time:	
This report is just for clinical reference and cannot taken as proof material			



Hunan Lituo Biotechnology Co., Ltd.

Add: No. 129, Weiloke Road, Wangcheng Economic Development Zone, Changsha, Hunan, China  
Tel: +86 731 82789607 (Sales Center) +86 731 8271 2733 (International Trade Dept)  
Fax: +86 731 8278 9603 / Email: info@lituo.com.cn



Zhuhai Lituo Development Co., Ltd.

Add: 2nd Floor, 4th Building, No. 611, Huawei Road, Zhuhai, Guangdong, China  
Tel: +86 756 8639 200 / Fax: +86 756 8369 055 / Email: info@lituo.com.cn