

Specifications

EXCEED IN QUALITY AND MORE

System function:

General:	Automatic, discrete, random access STAT sample priority
Throughput:	Constant 180 tests/hour Up to 270 tests/hour
Principle:	End-point, fixed-time, kinetic
Methodology:	Linear/non-linear multi-point calibration
Programming:	Open system, closed system on demand

Optical system:

Light source:	Halogen tungsten lamp
Photometer:	Maintenance-free sealed photometer, rear spectrophotometry by filter
Wavelength:	8 wavelengths: 340nm, 405nm, 450nm, 510nm, 546nm, 578nm, 630nm, 670nm
Absorbance:	0~3.5Abs

Reagent/Sample handling:

Reagent/Sample tray:	60 reagent positions, 60 sample positions in cooling compartment (2~12°C)
Reagent volume:	
R1:	150~450ul, step by 1 ul
R2:	10~300ul, step by 1 ul
Sample volume:	2~50ul, step by 0.1 ul
Reagent/Sample probe:	Liquid level detection and tracking, Collision protection Inventory checking
Probe cleaning:	Automatic washing of interior and exterior Carry-over < 0.1%
Automatic dilution:	Pre-dilution and post-dilution Dilution ratio up to 2: 201

Control and calibration:

Calibration:	Linear, Logit-Log 4P, Logit-Log 5P, Spline, Exponential, Polynomial
Control:	Westgard multi-rule, Cumulative sum check, Twin plot, L-J Chart

Working condition:

Operation system:	Win 7/ Win 8
Interface:	Net work port, RS-232
Power supply:	AC 100~240V, 50/60Hz, <=300VA
Temperature:	10-30°C
Humidity:	30-85% RH
Water consumption:	<=6.5 L/H
Dimension:	875mm (W) x660mm (D) x570mm (H)

Reaction system:

Cuvette:	Rotating tray, containing 81 cuvettes Semi-permanent rigid UV plastic cuvette
Reaction volume:	150~500ul
Reaction temperature:	37°C±0.1°C
Mixer:	Stand alone mixing bar
Cuvette washing:	6-step washing station(optional)



All rights reserved. Specifications subject to change without prior notice

Version 2.0

Genrui

Genrui Biotech Inc.

Add: 6F, Shanshui Building B, Nanshan Yungu Innovation
Industrial Park, 1183 Liuxian Blvd, Nanshan District,
518055, Shenzhen, P.R. China
Tel: +86 755 26835560/1/2 Fax: +86 755 26678789
Website: www.genrui-bio.com



Management
System
EN ISO 13485:2012
ISO 9001:2008
www.tuv.com
ID 000053928



Genrui

GS 300Plus

Auto Chemistry Analyzer

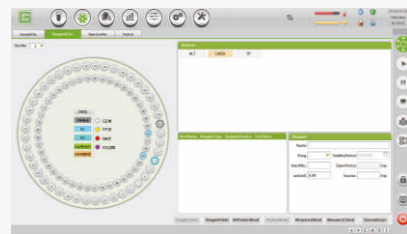
GS300Plus is the enhanced auto chemistry analyzer. A flexible chemistry solution for small and middle sized laboratories. It is a new benchtop chemistry analyzer which is more compact and high-efficient.

General feature

Random access, fully automated, STAT
 Throughput: Constant 180 tests per hour
 Up to 270 test per hour
 60 reagent positions and 60 sample positions
 81 reaction positions

Optional

Wash station
 Barcode scanner



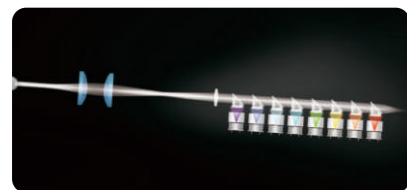
▶ User-friendly software

Easy operation with intuitive navigation
 One click to import and backup
 Auto troubleshoot failure recovery
 Auto dilution and re-run
 Bilateral LIS interface with HL7 protocol



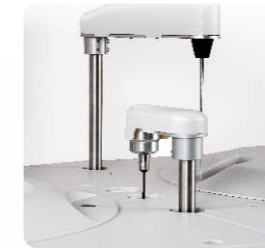
▶ Powerful functions

Reagent management, easy to know remaining tests, volume, left time
 Results distribution statistics, help to analyse local reference range
 Multi-QC graphs: Westgard, Cum sum, Twin plot
 Carryover setting avoid influence between reagents and samples



▶ Optical system

Halogen tungsten lamp with >2000H life time
 Completely sealed spectrophotometer by filter
 Simultaneously dual-wavelength detection
 Auto gain adjustment to assure stable optical system



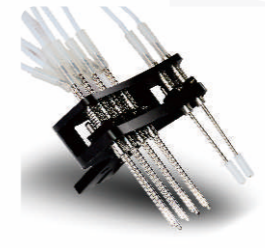
▶ Sampling system

One probe and one mixer bar
 High polished nano material avoid hanging liquid
 Maintenance-free rotor with stable movement
 High accuracy ceramic syringe
 Auto depth adjustment
 Liquid level detection, collision protection



▶ Sample & reagent disk

24-hour reagent refrigerator: 2-12°C
 60 reagent positions
 60 sample positions with STAT priority
 Auto filling the cooling water



▶ Reaction system

81 reaction cuvettes
 Constant solid heating
 Reaction temperature: 37°C±0.1°C
 Reaction volume 150-500ul
 6-step wash station (optional)



▶ Realtime monitoring

Status monitoring
 Realtime water blank test
 Realtime dirty cuvette detection, avoid extra operation

▶ Complete diagnostic solution

Independent reagent center allow us to dedicate in the R&D of reagent
 All facilities meet ISO 9001 and ISO 13485 standard
 Comprehensive selection of reagents, including hepatic panel, renal panel, pancreatic panel, lipid panel, cardiac panel, etc
 Matched calibrators and controls are provided upon request

