

# Specifications

EXCEED IN QUALITY AND MORE

## System function:

General: Automatic, discrete, random access  
STAT sample priority  
Throughput: Up to 150 tests/hour  
Principle: End-point, fixed-time, kinetic  
Methodology: Linear/non-linear multi-point calibration  
Programming: Open system, closed system on demand

## Optical system:

Light source: Halogen tungsten lamp  
Photometer: Maintenance-free sealed photometer,  
rear spectrophotometry by filter  
Wavelength: 8 wavelengths: 340nm, 405nm, 450nm,  
510nm, 546nm, 578nm, 630nm, 670nm  
Absorbance: 0~3.5Abs

## Reagent/Sample handling:

Reagent/Sample tray: 40 reagent positions, 40 sample positions  
in cooling compartment (4~12°C)  
Reagent volume:  
R1: 150~450ul, step by 1 ul  
R2: 10~300ul, step by 1 ul  
Sample volume: 2~50ul, step by 0.1 ul  
Reagent/Sample probe: Liquid level detection and tracking,  
vertical & horizontal collision protection  
and inventory checking  
Probe cleaning: Automatic washing of interior and exterior  
Carry-over < 0.1%  
Automatic dilution: Pre-dilution and post-dilution  
Dilution ratio up to 1: 200

## Control and calibration:

Calibration: Linear, Logit-Log 4P, Logit-Log 5P,  
Spline, Exponential, Polynomial  
Control: Westgard multi-rule, Cumulative sum  
check, Twin plot, L-J Chart

## Working condition:

Operation system: Win 7/ Win 8  
Interface: RS-232  
Power supply: AC 100~240V, 50/60Hz, <=300VA  
Temperature: 10-30°C  
Humidity: 30-85% RH  
Dimension: 720mm (W) x450mm (D) x550mm (H)  
Weight: 60 Kg

## Reaction system:

Cuvette: Rotating tray, containing 50 cuvettes  
Semi-permanent rigid UV plastic cuvette  
Reaction volume: 160~500ul  
Reaction temperature: 37°C±0.1°C  
Mixer: Stand alone mixing bar  
Cuvette washing: 6-step washing station(optional)



All rights reserved. Specifications subject to change without prior notice

Version 2.0

**Genru**

### Genru Biotech Inc.

Add: 6F, Shanshui Building B, Nanshan Yungu Innovation  
Industrial Park, 1183 Liuxian Blvd, Nanshan District,  
518055, Shenzhen, P.R. China  
Tel: +86 755 26835560/1/2 Fax: +86 755 26678789  
Website: www.genru-bio.com

**Genru**

# GS 200<sub>(2016)</sub> Auto Chemistry Analyzer

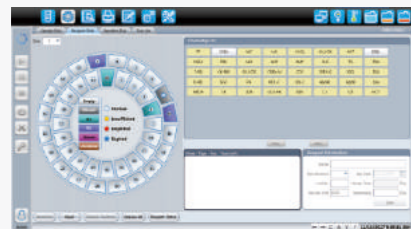
GS200 is the classic model for chemistry assays. The compact benchtop and robust functionality will allow you to enjoy a pleasant operation.

## General feature

Random access, fully automated, STAT  
Throughput: Up to 150 tests per hour  
40 reagent positions and 40 sample position  
50 reaction positions

## Optional

Wash station  
Barcode scanner  
Internal PC with touch screen



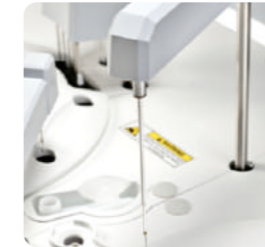
## User-friendly software

Easy operation with intuitive navigation  
Easy reagent parameters setting  
One click to import and backup  
Auto troubleshoot failure recovery  
Powerful statistic system  
Manual dilution, auto dilution and post dilution  
Easily re-run and restore test  
Bilateral LIS interface with HL7 protocol



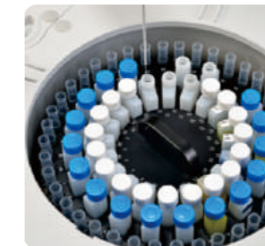
## Optical system

Halogen tungsten lamp with more than 2000hours' life time  
Completely-sealed spectrophotometer by filter  
Simultaneously dual-wavelength detection  
Auto gain adjustment to assure stable optical system



## Sampling system

One probe and one mixer bar  
High polished nano material avoid hanging liquid  
Maintenance-free rotor with stable movement  
High accuracy ceramic syringe  
Auto depth adjustment  
Liquid level detection, vertical and horizontal collision protection



## Sample & reagent disk

24-hour reagent refrigerator: 4-12°C  
Noise free water cooling design  
40 reagent positions  
40 sample positions with STAT priority



## Reaction system

50 reaction cuvettes  
Constant solid heating  
Reaction temperature: 37°C±0.1°C  
6-step wash station (optional)  
Reaction volume 160-500ul

## Complete diagnostic solution

Independent reagent center allow us to dedicate in the R&D of reagent  
All facilities meet ISO 9001 and ISO 13485 standard  
Comprehensive selection of reagents, including hepatic panel, renal panel, pancreatic panel, lipid panel, cardiac panel, etc  
Matched calibrators and controls are provided upon request

