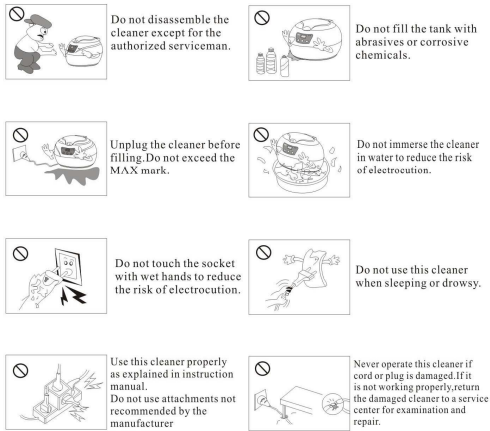


IMPORTANT SAFETY INSTRUCTIONS

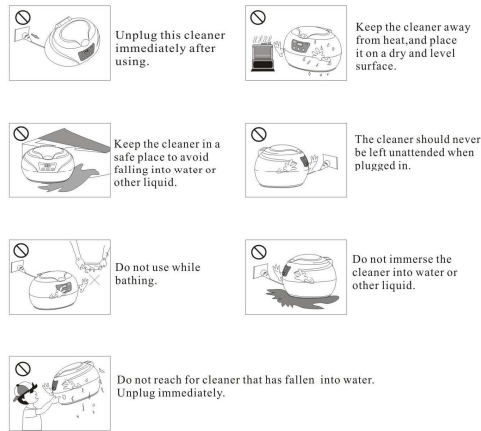
WARNING- TO reduce the risk of burns, electrocution, fire or injury to persons



! Any unsecure initial articles may become loose. Articles that are easily discolored are not recommended for ultrasonic cleaning. For example: textiles, leather products, woodware, etc.

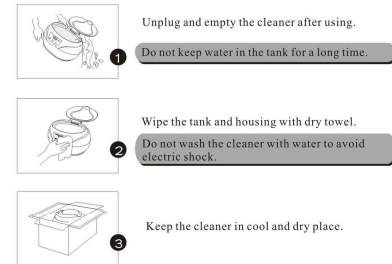
IMPORTANT SAFETY INSTRUCTIONS

DANGER- TO reduce the risk of electrocution



! Do not put mobile phone or watch which is not waterproof into the tank for cleaning. Do not put any spectacles frame or art ware which is made from shell or hawkbill into the tank for cleaning.

USER MAINTENANCE



USAGE OF OPTIONAL ACCESSORIES

PLASTIC BASKET

When small item are to be cleaned, put the item into plastic basket, then put the basket into the tank. In this way, frictions between the item will be reduced.

Pay attention: The plastic basket is only for cleaning small items, because it absorbs about 30% of ultrasonic energy and reduces the cleaning result. When using the plastic basket, please refer to the instruction of ENHANCED CLEANING in this manual.

WATCH STAND

Ultrasonic osmosis is strong. Do not put the ordinary waterproof watch (water proofing capability less than 30 meters) into the tank and clean directly. This may cause watch damage. It is recommended to use the watch stand, immerse the watchband in water. Similar to the plastic basket, the watch stand will absorb ultrasonic energy. When using it, please refer to the ENHANCED CLEANING.

- PLEASE READ THIS INTRODUCTION BEFORE USING
- KEEP THIS MANUAL FOR REFERENCE



ULTRASONIC CLEANER

880
890

INSTRUCTION MANUAL

Application

Eyeglasses shop, jewelry shop, clocks & watch shop, repair shop, hospital, dental clinics, laboratory, electronic workshop, office and household use.



PRODUCT INTRODUCTION



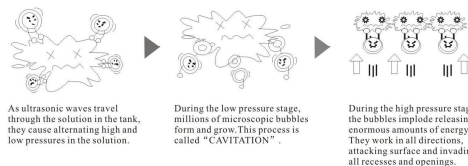
SPECIFICATIONS:

NAME	ULTRASONIC CLEANER	POWER SUPPLY	<input type="checkbox"/> AC100-120V 60Hz <input type="checkbox"/> AC200-240V 50Hz
MODEL	<input type="checkbox"/> 880 <input type="checkbox"/> 890	POWER	50W
OVERALL SIZE	206×152×132mm	FREQUENCY	42KHz
TANK SIZE	155×95×52mm	TIME SETTING	JP-880 5min, auto off JP-890 0-30min.
VOLUME	600ml	G.W	1000±5g

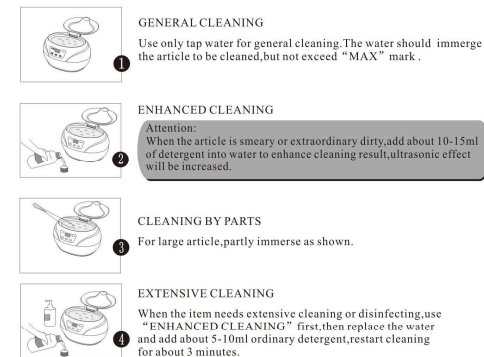
AVAILABLE FOR

Glasses and Watch	Jewellery	Daily used
Glasses, Sun glasses, Watch chains, Waterproof watches etc.	Necklaces, Rings, Earrings, Bracelets etc.	Electric shaver heads, Razor blades, Dentures, Combs, Toothbrushes etc.
Metal Articles	Metal Dishware	Stationery
Watch parts, Ancient coins, Badges, Machine nozzles etc.	Forks, Knives, Spoons, etc.	Pen-heads, Printer-heads, Inkjet cartridges, Seals etc.

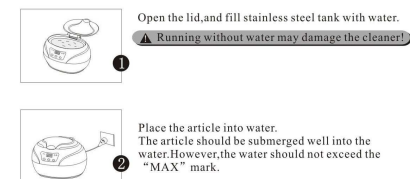
DIRT ELIMINATION PROCESS THROUGH ULTRASONIC TECHNOLOGY



FOUR WAYS OF CLEANING



OPERATION INSTRUCTIONS



OPERATION INSTRUCTIONS

