

WWW.CHISON.COM



ECO6

More Advanced **More** Powerful

CHISON

Value Beyond Imaging

More advanced *More Powerful*

As a new member of ECO family. ECO6, has considered the most frequent request of users, adding more advanced features and capabilities inside this ultra-compact body, to provide better patient care.



Easy to operate Easy to go



ONE KEY to selected the desired application with automatic preset



ONE KEY to optimize the image automatically



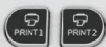
ONE KEY to save still image and CINE loop



ONE KEY to measure



ONE KEY to make report



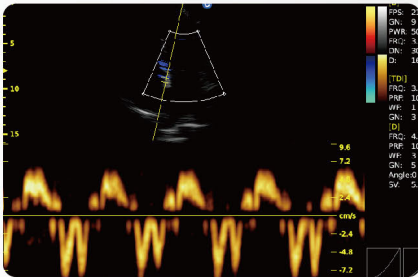
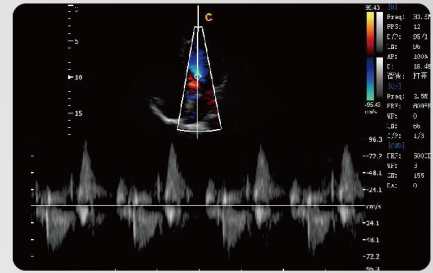
ONE KEY to print to PC or video printer (see page 4 option)



More advanced

Continuous Wave (CW) Doppler

Detect blood flow with high velocity and help doctors diagnose with more clinical information.

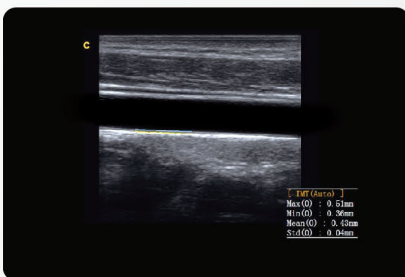
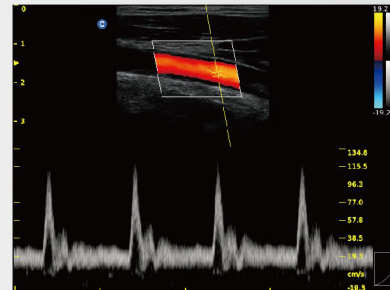


Tissue Doppler Imaging (TDI)

Tissue Doppler imaging is a novel echocardiography technique that directly measures myocardial velocity. Systolic TD measurements assess left and right ventricular myocardial contractile function. Diastolic TD values reflect myocardial relaxation.

Triplex

Triplex combines B, color, with PW to help the user make diagnosis more conveniently and more accurately, help to improve the efficiency

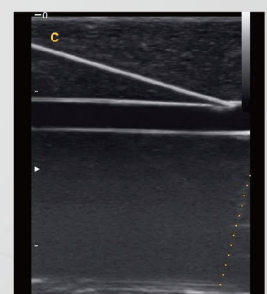
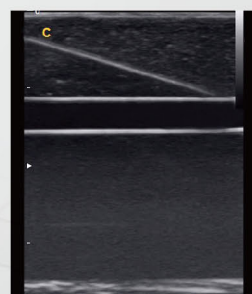


Auto IMT Function

Automatically traces the intima, and measures the thickness of the intima. This allows you to measure the intima faster, more easily and more accurately.

Super Needle

With Super Needle, clinicians can see needle inside tissue more clearly during medical procedures. Needle angle up to $\pm 30^\circ$



Without Super Needle
Needle is Not clear

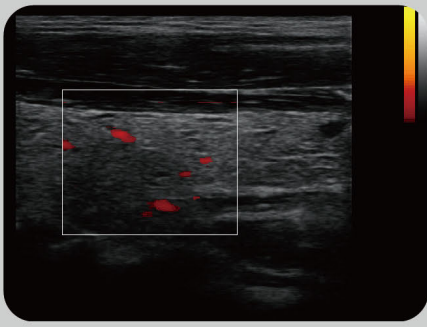
With Super Needle
Needle is Better Visualized

More Powerful

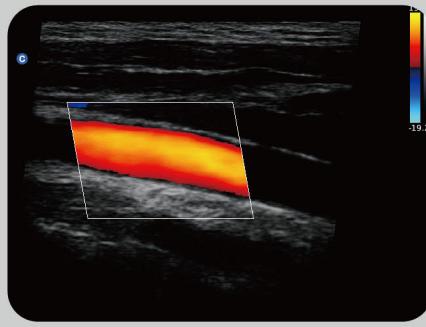
- ✓ *Abdomen, OB/GYN, Urology, cardiac*
- ✓ *Phased array probe*
- ✓ *CW, TDI, B/BC, super needle*
- ✓ *2D steer, triplex, Auto IMT, Automatic pw trace, CPA,DPD*



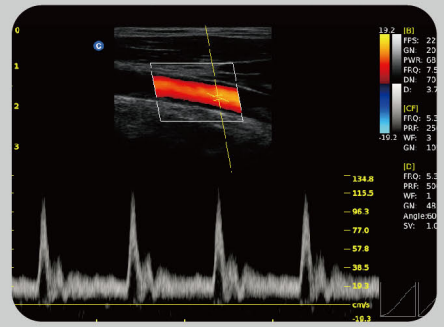
ECO6



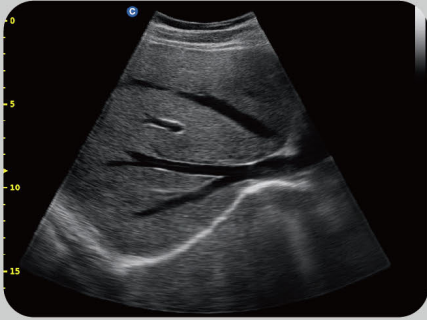
Thyroid, CPA Mode



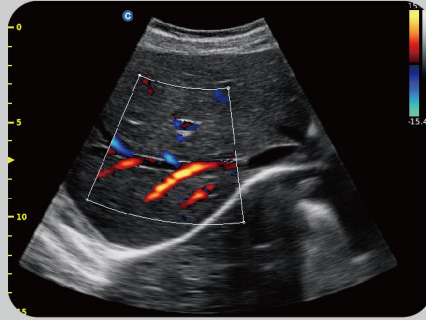
Carotid, 2D steer



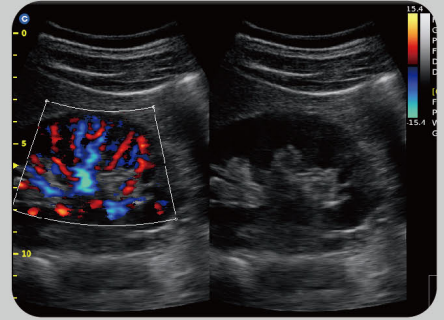
Carotid, Triplex



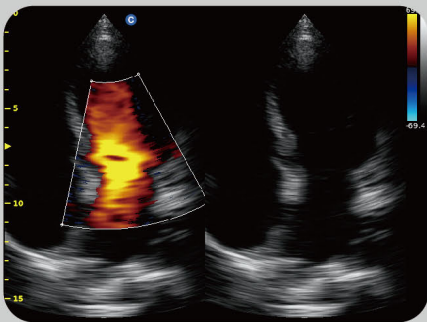
Liver, B Mode



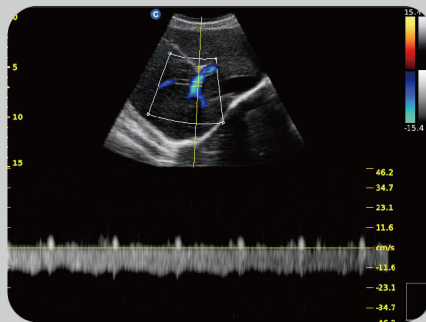
Liver, Color Mode



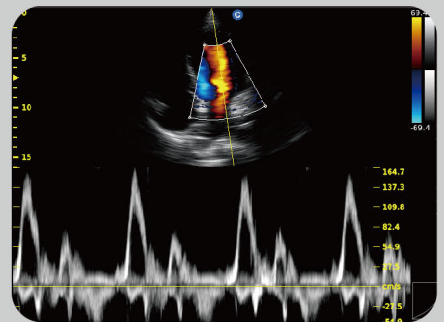
Kidney, B/BC Mode



Cardiac, B/BC Mode



Liver, PW Mode



Cardiac, PW Mode



2.5MHz-5.0MHz Convex
C3-A



5.3MHz-10.0MHz Linear
L7M-A



5.3MHz-11.0MHz Linear
L7S-A



4.5MHz-8.0MHz Transvaginal
V6-A



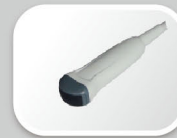
5.0MHz-10.0MHz Trans-Rectal
R7-A



2.5MHz-4.5MHz Phased Array
P3-A



2.5MHz-5.0MHz Micro-Convex
MC3-A



4.5MHz-8.0MHz Micro-Convex
MC6-A

CHISON Medical Technologies Co., Ltd.

Sales & Service Contact Address:

No.9, Xinhuihuan Road, Xinwu District, Wuxi, Jiangsu, China 214028

TEL : 0086-510-85310593 / 85310937

FAX : 0086-510-85310726

EMAIL : export@chison.com.cn